

SOPRON PAVILION

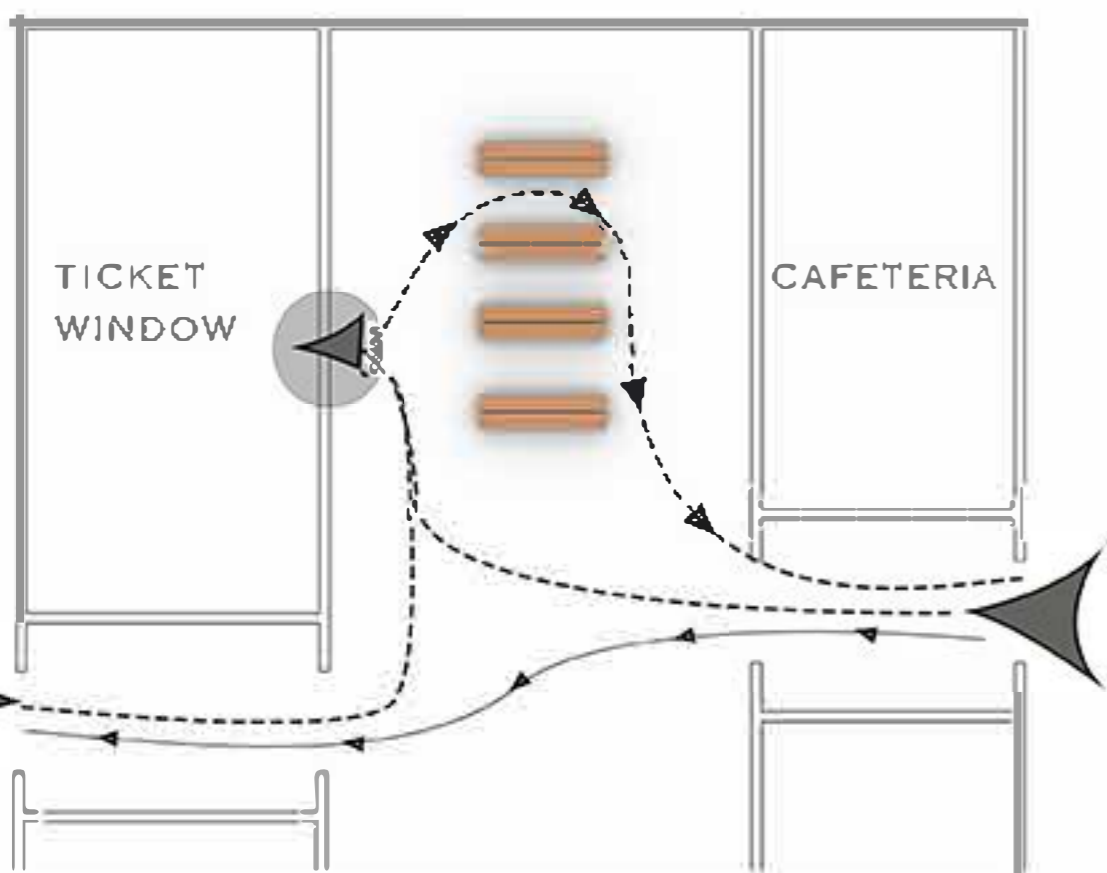
GYSEV INSTALLATION DESIGN IN THE MEMORY OF 150 YEARS ANNIVERSARY CELEBRATION.

THE MAIN IDEA WAS TO REPLACE THE EXISTING SEATING WITH SOMETHING MODERN AND MORE INTERESTING TO THE USERS, AS WELL AS DESIGNING A PLACE WHERE YOU CAN PRESENT INFORMATION RELATED TO THE COMPANY. THE PAVILION WAS CONCEIVED AS AN ORGANISM GENERATED BY A SEQUENCE OF LAYERS, CONSISTING OF 20 MM THICK PANELS ASSEMBLED TOGETHER AND BRACED USING 100 MM HIGH UPRIGHTS.

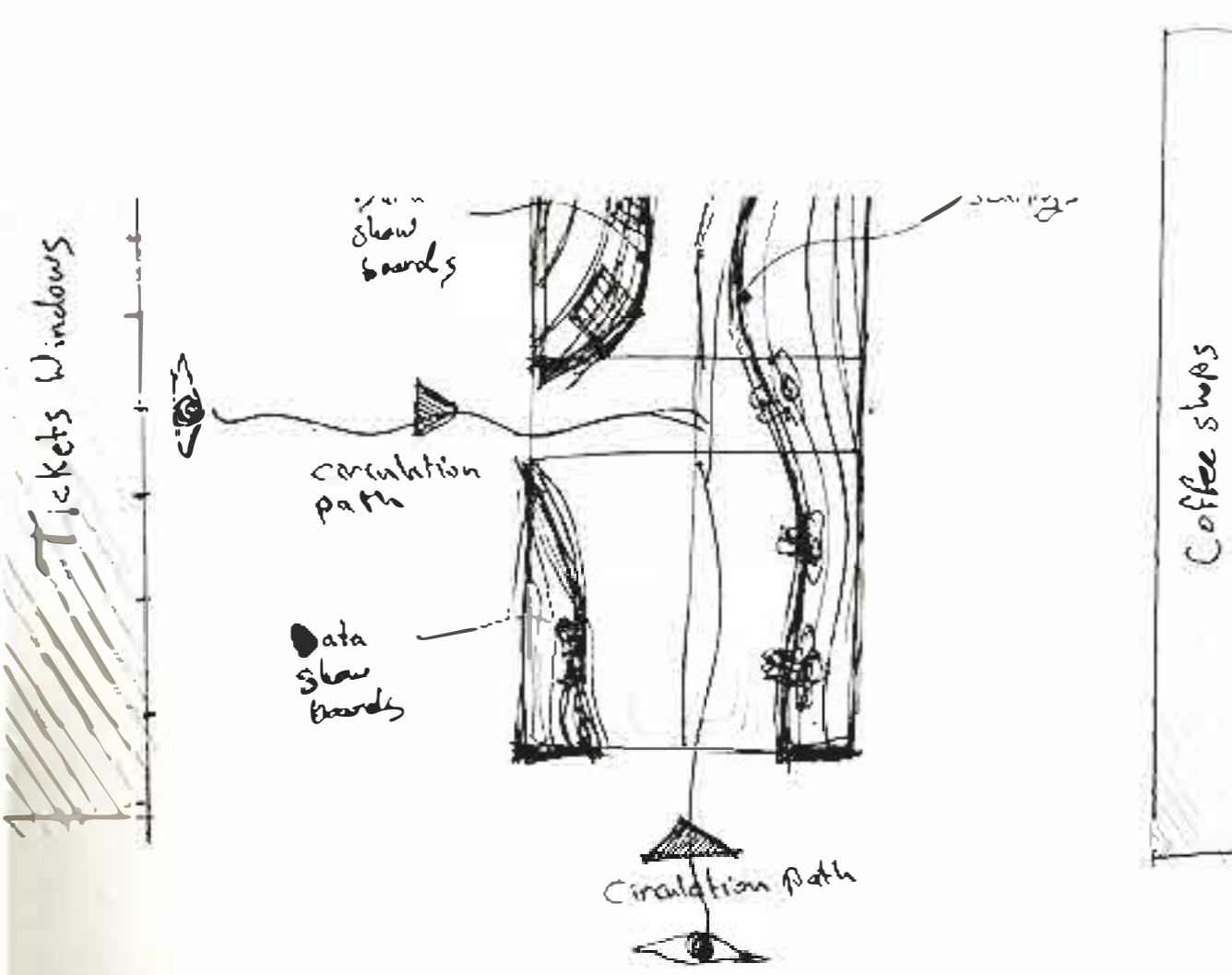
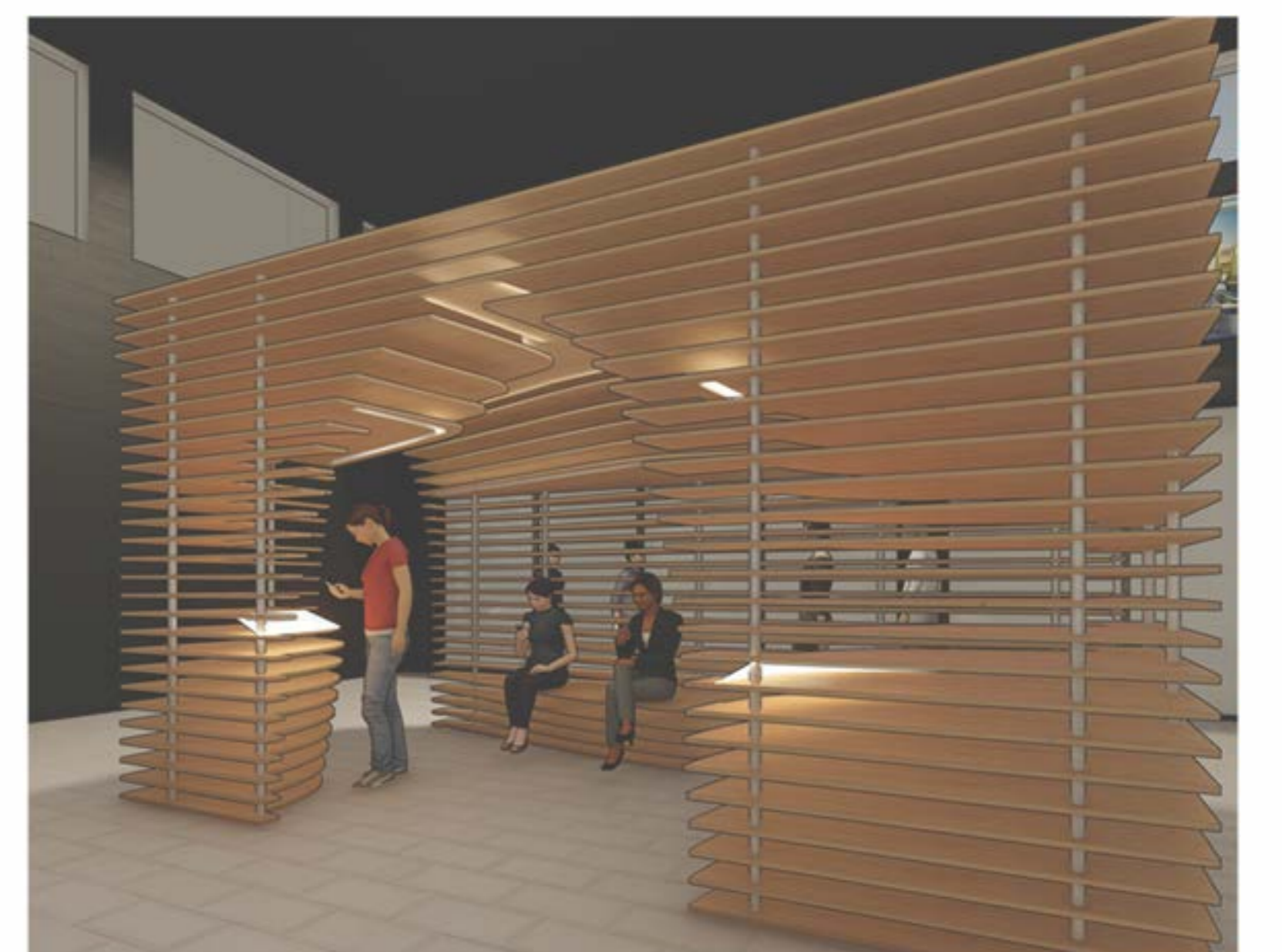
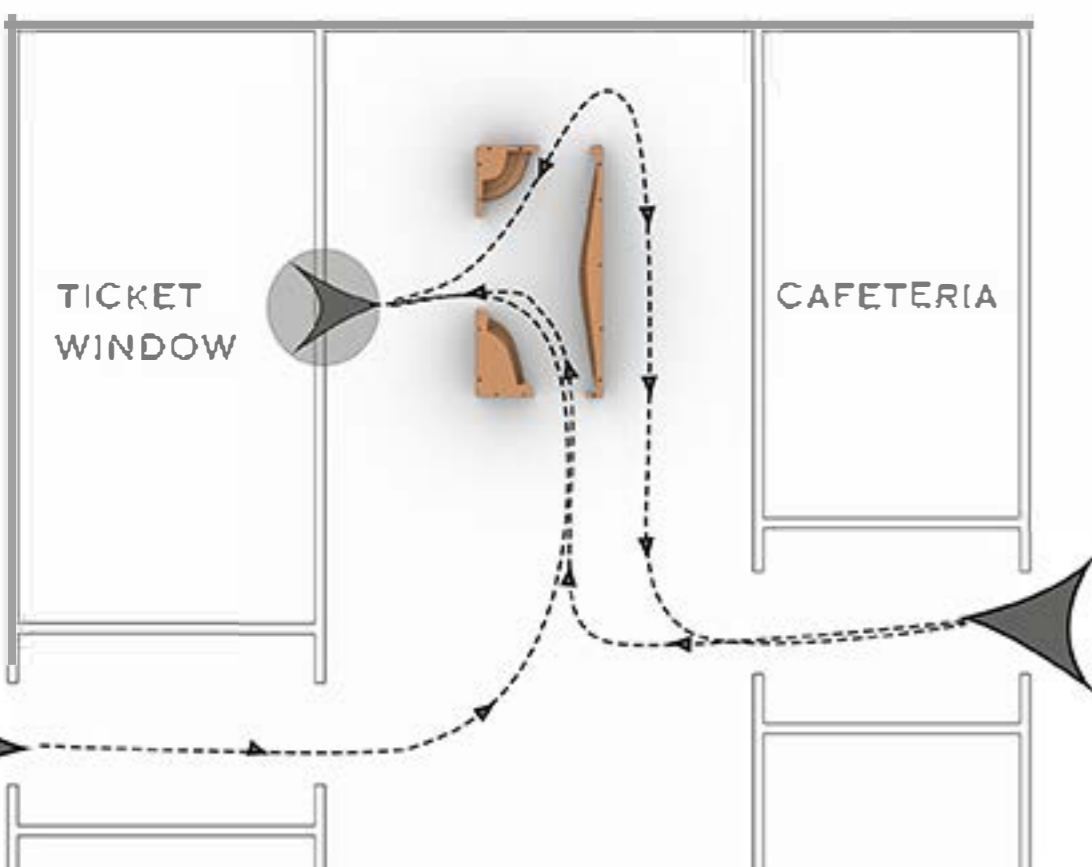
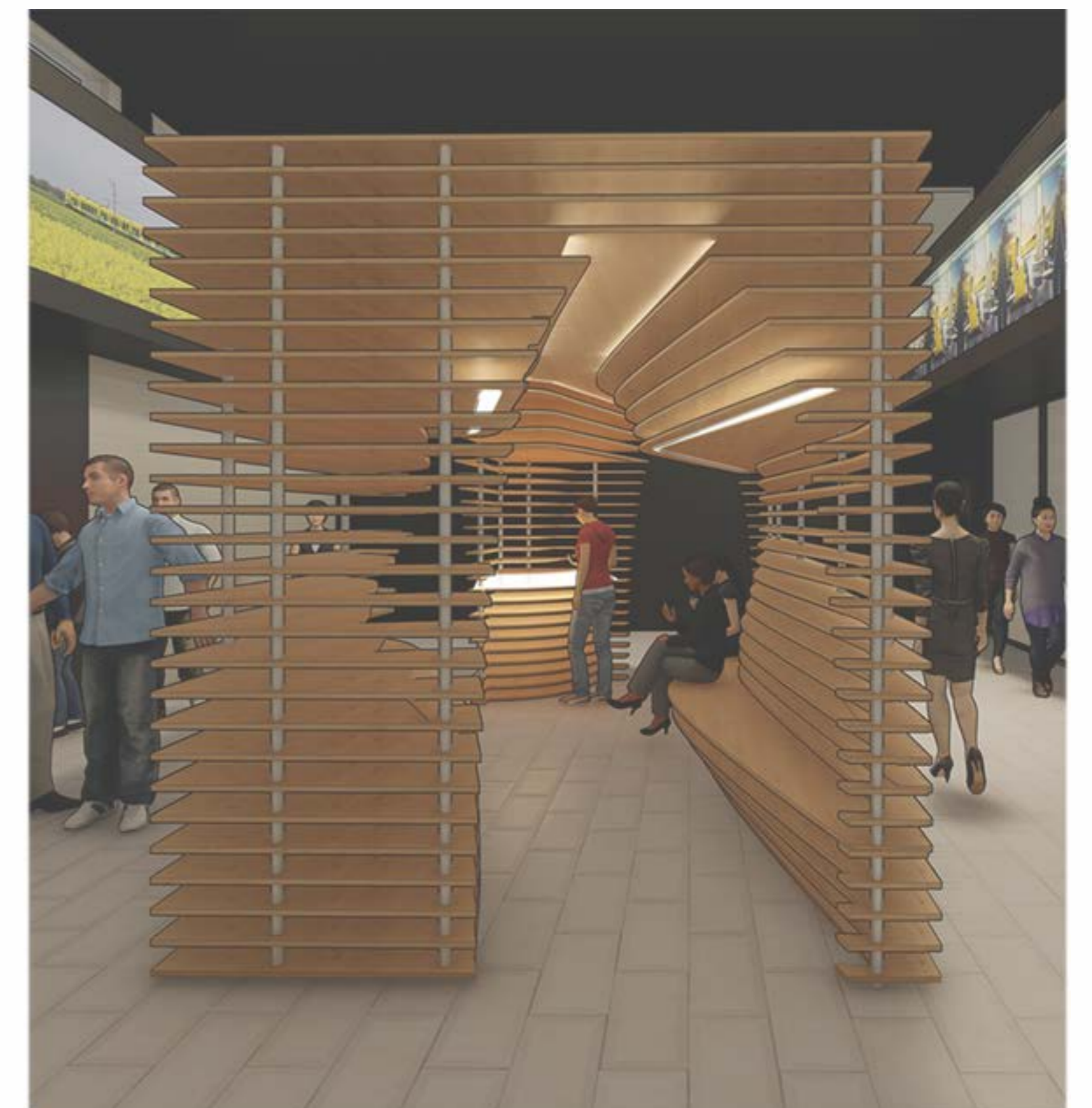
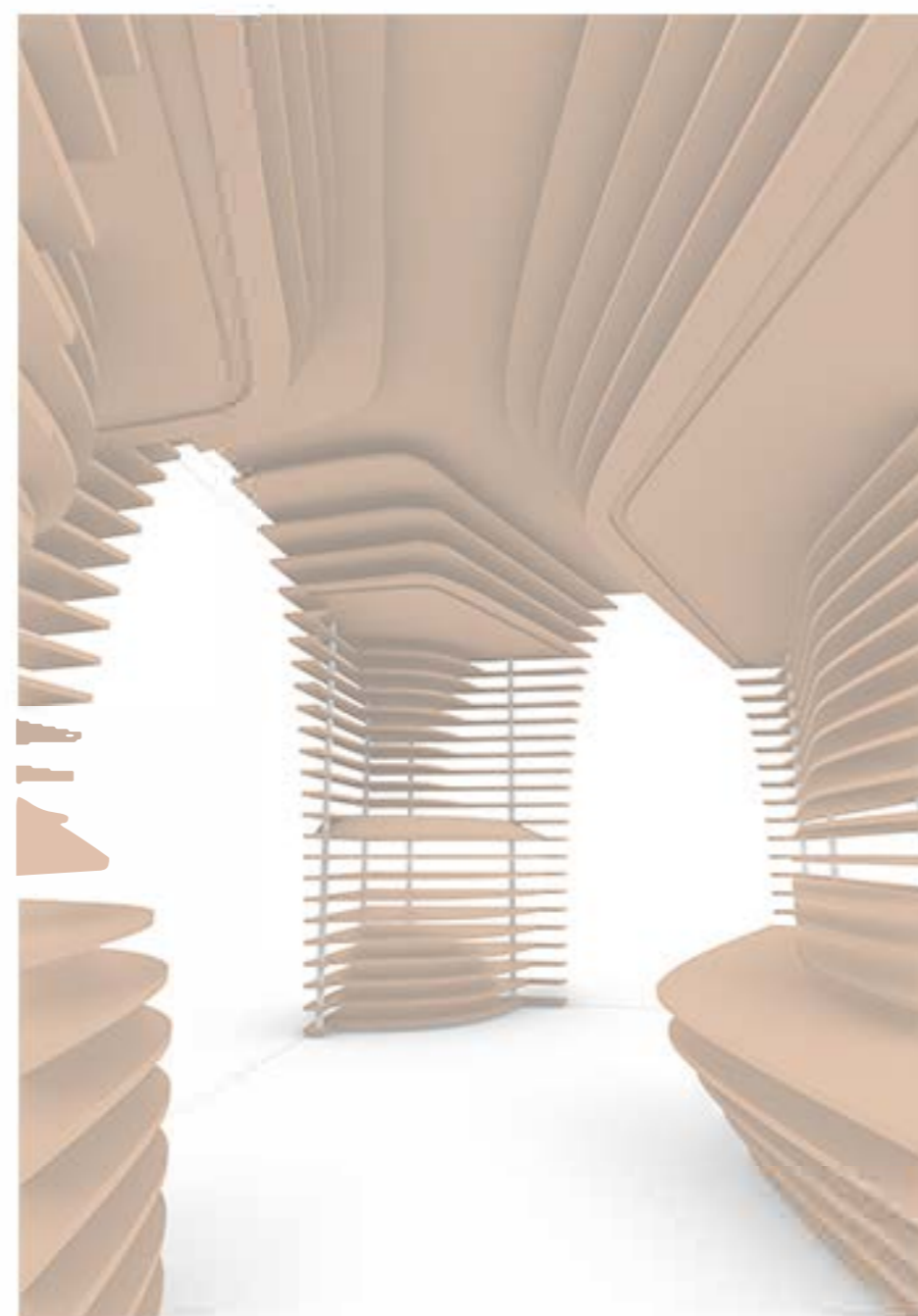
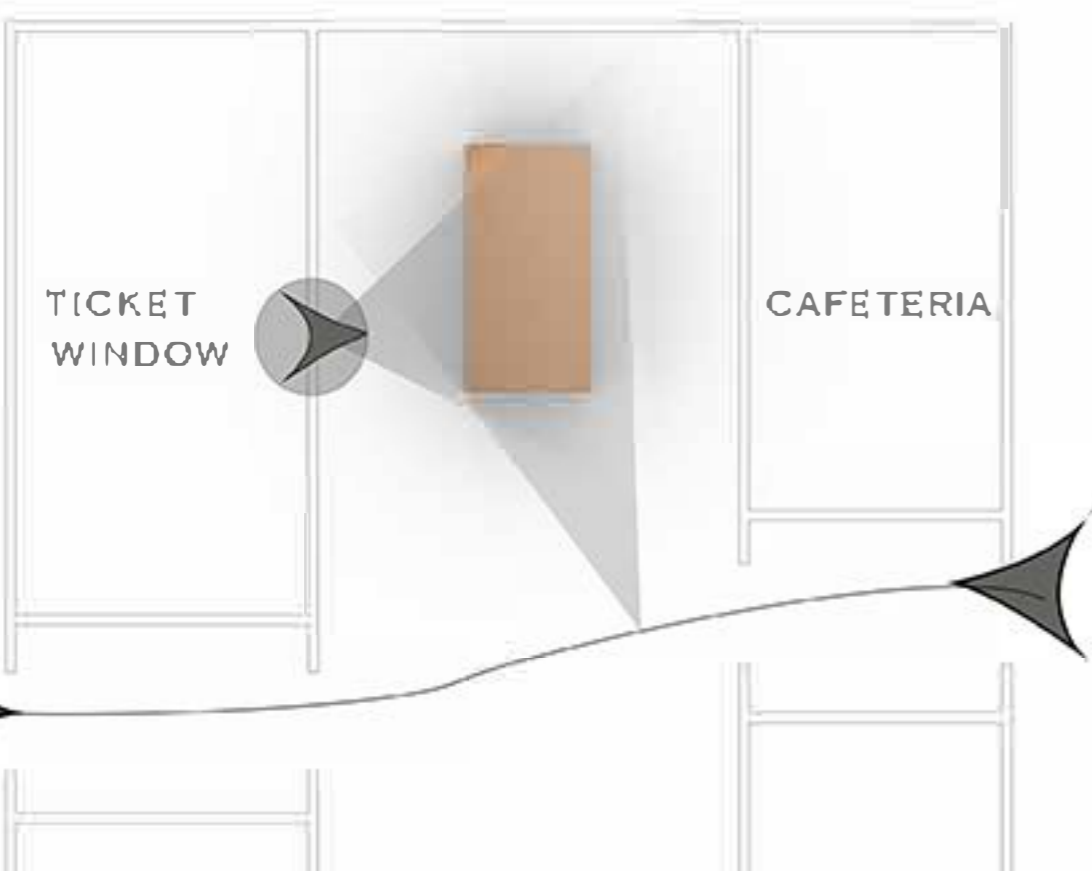
THE REASON WHY WE DECIDED TO CHOSE THIS CONCEPT IS BECAUSE ITS TRANSPARENT AND IT DOESN'T EFFECT THE SURROUNDING OR BLOCK THE VISION, AND ITS MODERN AND INTERESTING TO THE USER.

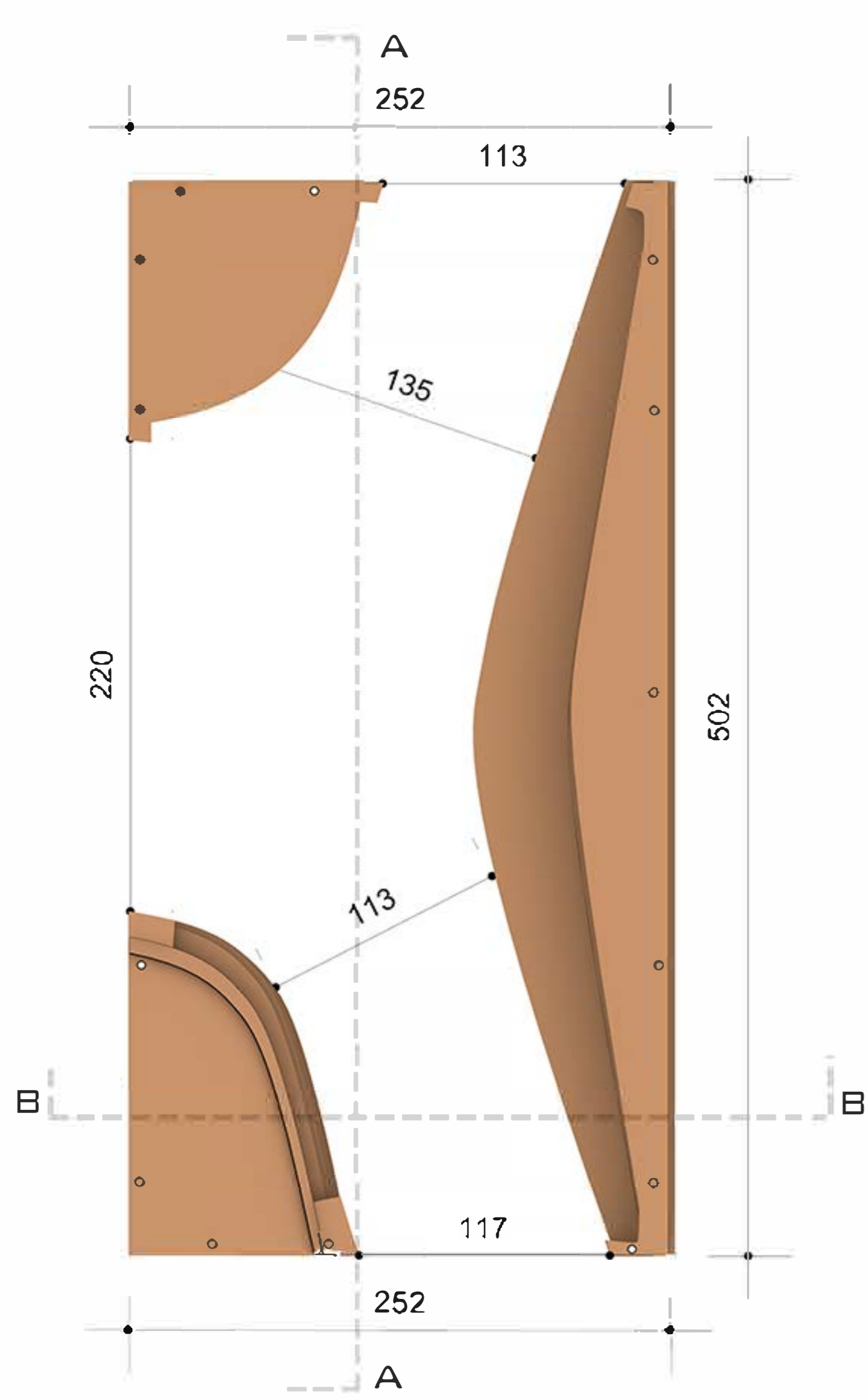
IT ALSO HAS TWO SHOW BOARDS WHERE THE COMPANY CAN PRESENT WHATEVER THEY LIKE TO ON THEM (ANY KIND OF INFORMATION REGARDING THE COMPANY).

VIDEO LINK : [HTTPS://MEGA.NZ/FILE/4SBVWSys#61TC5TZ-PC1FLRKGJS1NWL1PKRD-QIRZPAYVYURNK3Q](https://mega.nz/file/4SBVWSys#61TC5TZ-PC1FLRKGJS1NWL1PKRD-QIRZPAYVYURNK3Q)

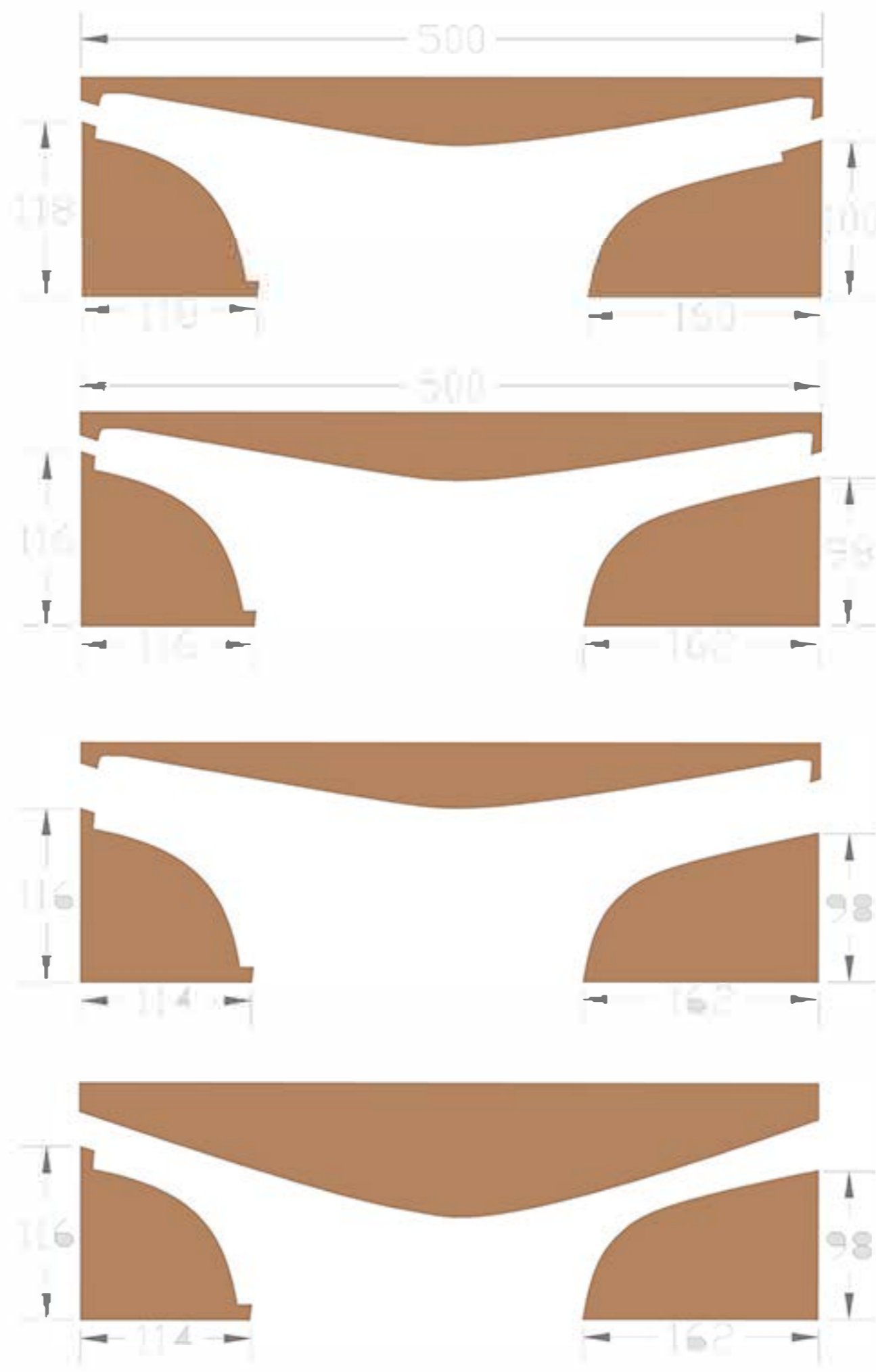


TRANSPARENCY

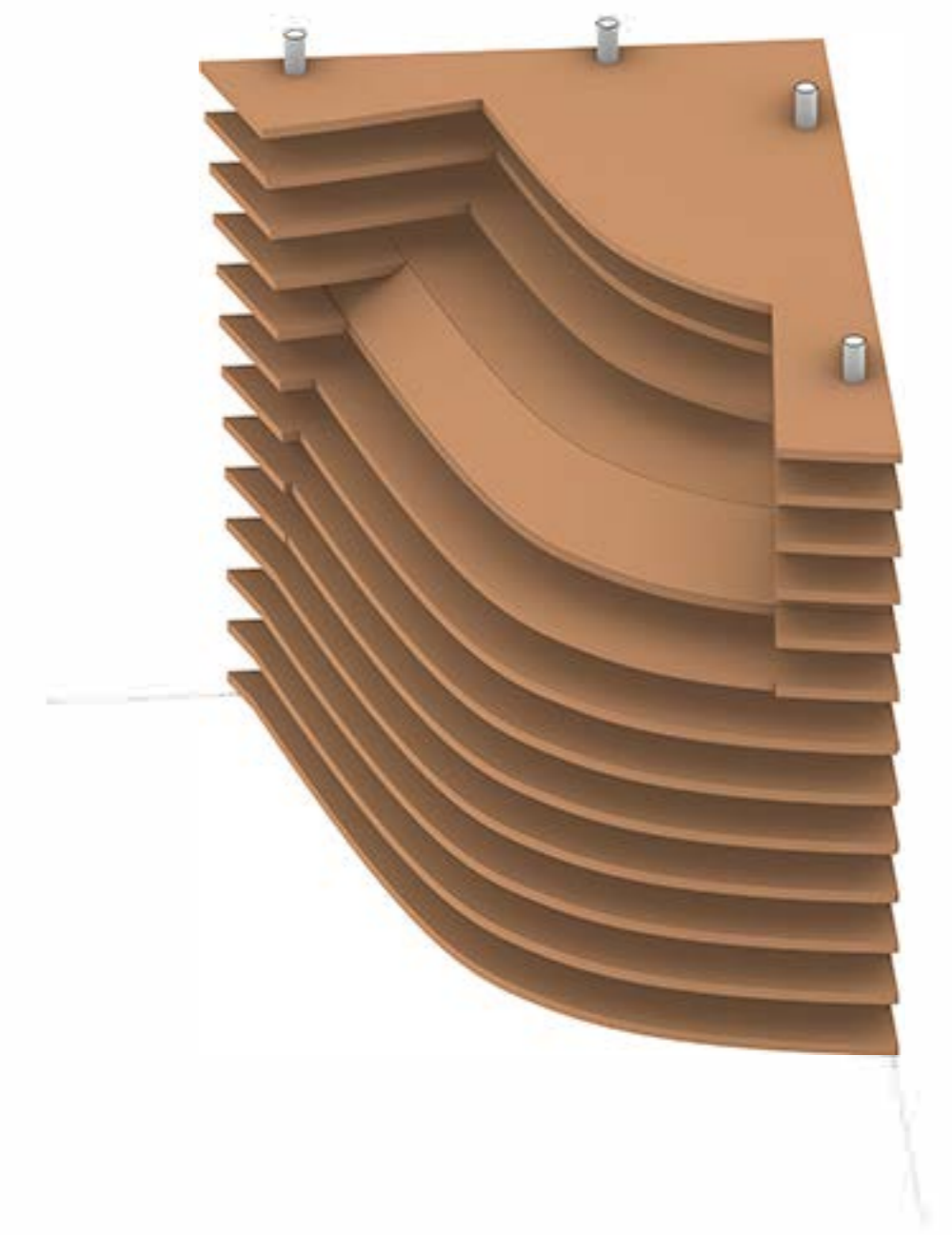




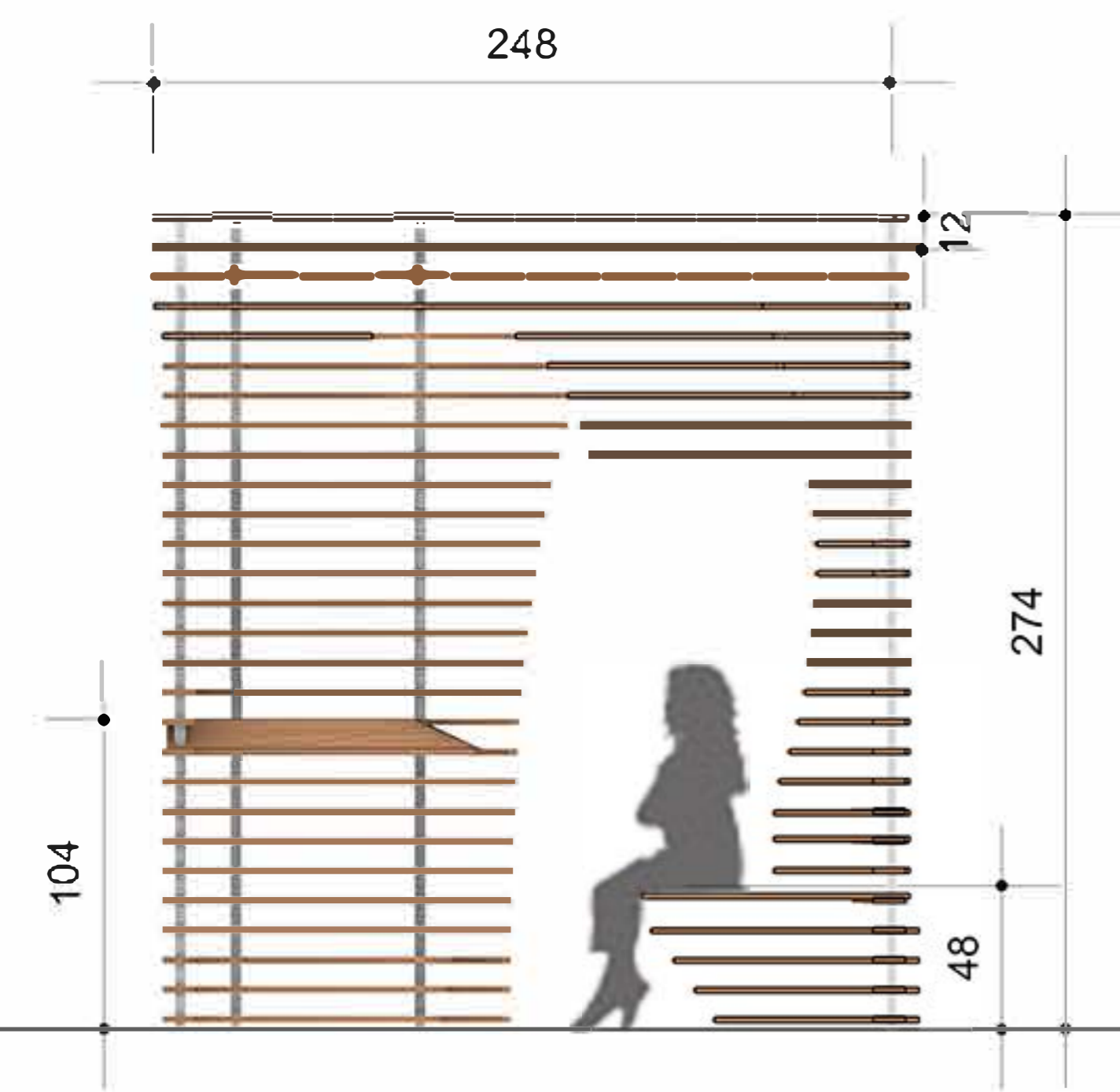
PLAN 1.20



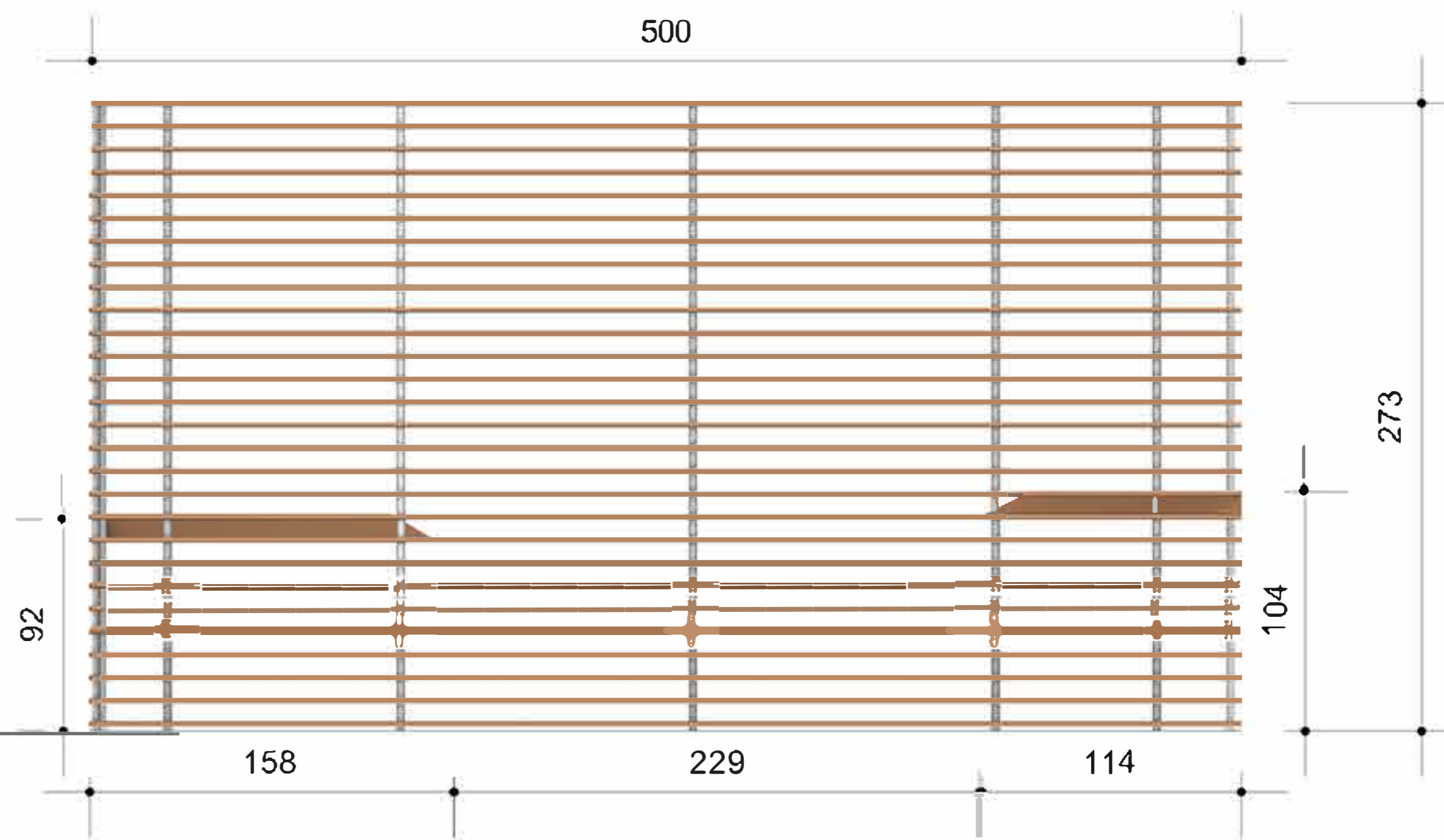
LAYERS TOP VIEW



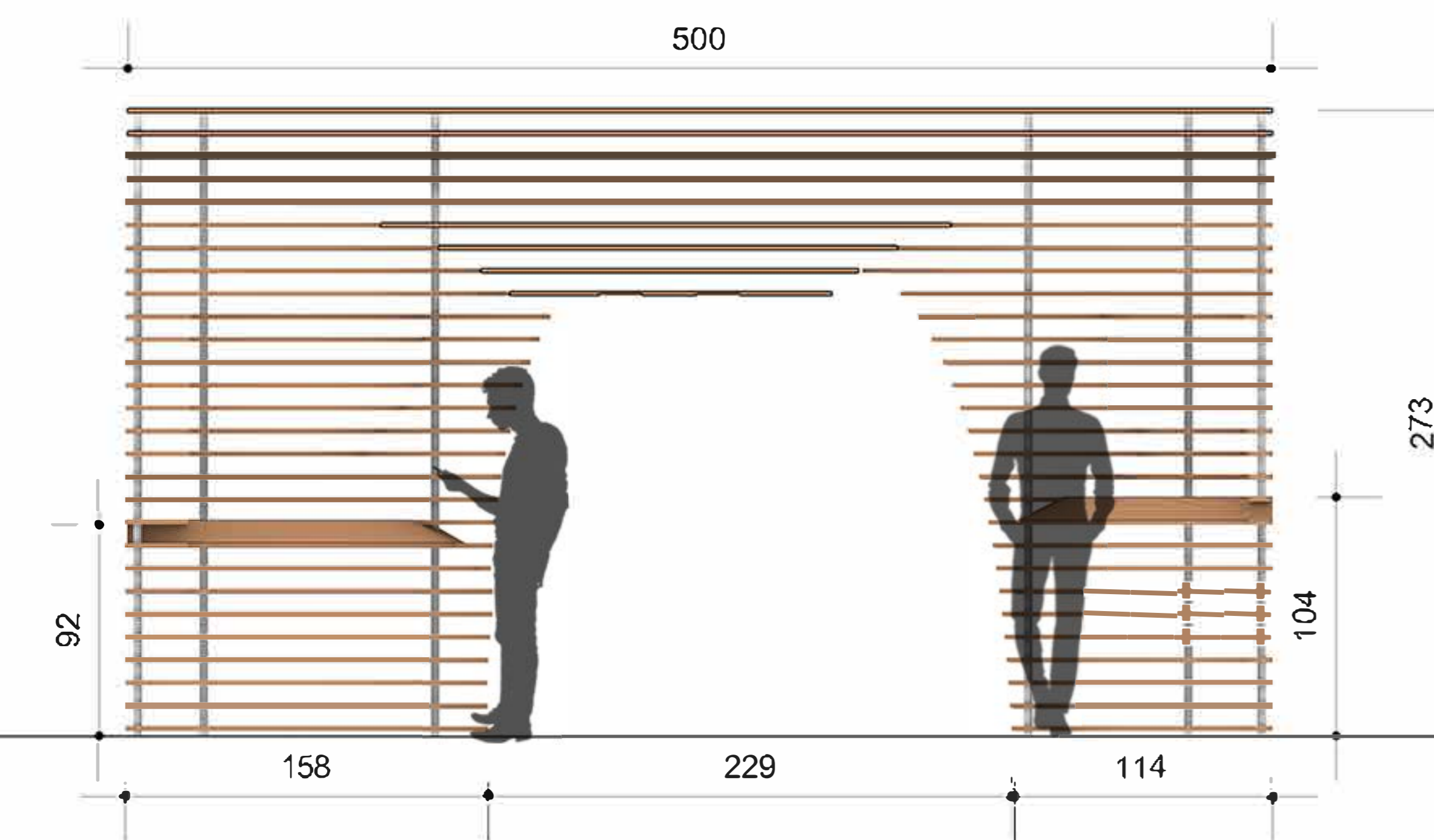
STRUCTURE DETAIL



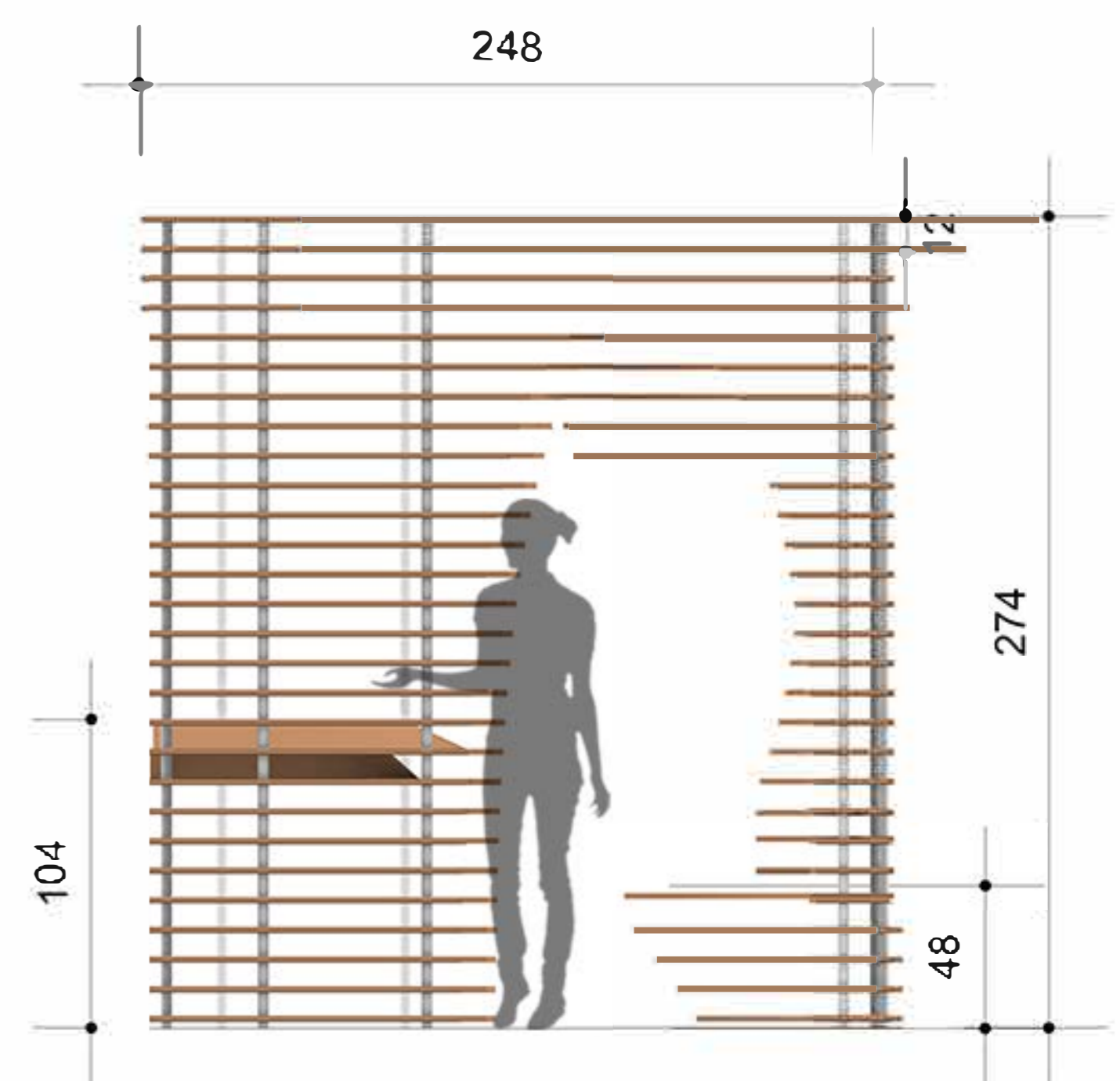
SECTION BB 1.20



ELEVATION 1.20



SECTION AA 1.20



ELEVATION 1.20